



ColorSave 1000

**Meter the masterbatch, additives
control the costs**

失重式螺桿計量機

能精確的計量色母及添加劑，有效控制成本，減少原料浪費

Highly advanced and cost-effective single component masterbatch (MB)/additive gravimetric feeder for injection molding, extrusion and blow molding machines.

Patent-based ColorSave 1000 has an inner weighing hopper which ensures excellent resistance to mechanical shocks and vibrations. Innovative design and algorithms ensure homogenous dosing, regardless of material density changes or other dynamic parameters.

ColorSave1000 是高度先進的及符合成本效益的單站稱重式計量機. 可用於射出機 擠出機及吹塑機, 是屬於色母粒/添加劑的重量式計量機。

ColorSave1000 含一個稱重式料筒, 優異機械結構耐衝擊和振動。創新的設計和精確的稱重演算方式, 無論原料的密度變化或其他動態參數的改變, 皆能確保均勻的計量。

ColorSave 1000 advantages and features:

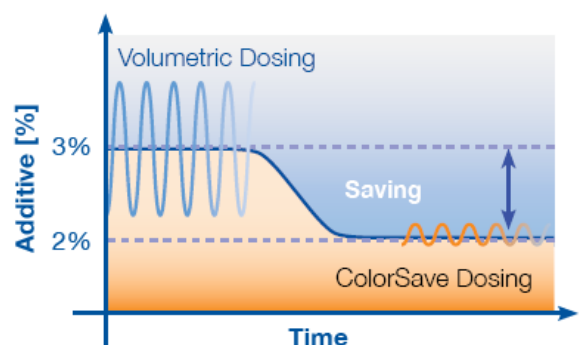
優點及特性

- Extreme accuracy and repeatability allows precise dosing and prevents overdosing of materials.
極高的精準度和穩定性, 能精確的計量, 防止過多的原料浪費。
- Loss-in-weight controlling function allows optimum adjustment of operating point.
失重式的控制功能, 能做最佳的操作調整。
- Improved final product quality.
改善產品的質量。
- Reduced number of rejects
降低產品的不良率。
- Very simple operation with automatic calibration (zero setup time) ensure maximal efficiency.
簡易的操作及自動校正功能(零設定時間), 確保最大的效益。
- Suited to any injection molding, extrusion and blow molding machines.
適用於任何射出機, 押出機及吹塑機。
- Stores up to 999 recipes, shortened setup time.
最多可存儲 999 個配方, 縮短設定時間。
- Easy replacement of feeding screw.
容易更換計量螺桿。
- Integrated automatic Venturi vacuum loader for materbatch.
結合正壓式吸料機輸送控制, 輸送色母/添加劑。
- Real-time data collection and management of material consumption using control software.
即時的數據資料及原料消耗量的控制管理軟體。

Significant saving compared to volumetric feeder and batch blenders.

與體積式及批次計量機做比較, 顯著的節省成本。

- Up to 50% saving MB/additives consumption compared to volumetric feeder.
與體積式計量機比較, 色母/添加劑的用量, 可節省高達 50%
- Up to 35% savings MB/ additive consumption compare to remote batch blender.
與批次計量機比較, 色母/添加劑的用量, 可節省高達 35%。
- Up to 15% savings MB/ additive consumption



compare to batch blender on machine throat.

與同樣安裝在機械入料喉口的批次計量機比較，色母/添加劑的用量，可節省高達 15%

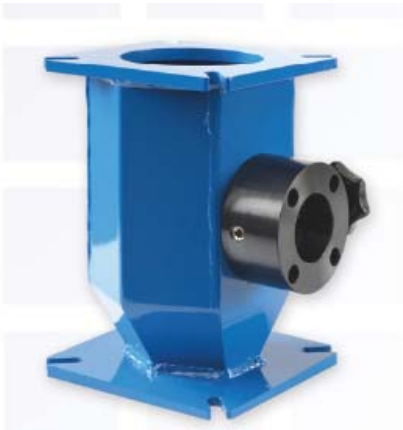
ColorSave 1000 includes a standard hexagonal neckpiece.

ColorSave 1000 配有標準的承接座

Also available on the request:

另外也依需求提供如下的承接座做搭配.

- Cooled neckpiece, useful when the main material is dried PET 200°C
冷卻式的承接座，適用於 PET 200 度高溫的原料
- Neckpiece with mixer, for maximum mixing capabilities.
承接座含攪拌裝置，適用於最大的混合能力.



Hexagonal Neckpiece
六角式承接座



Cooled Neckpiece
冷卻式承接座

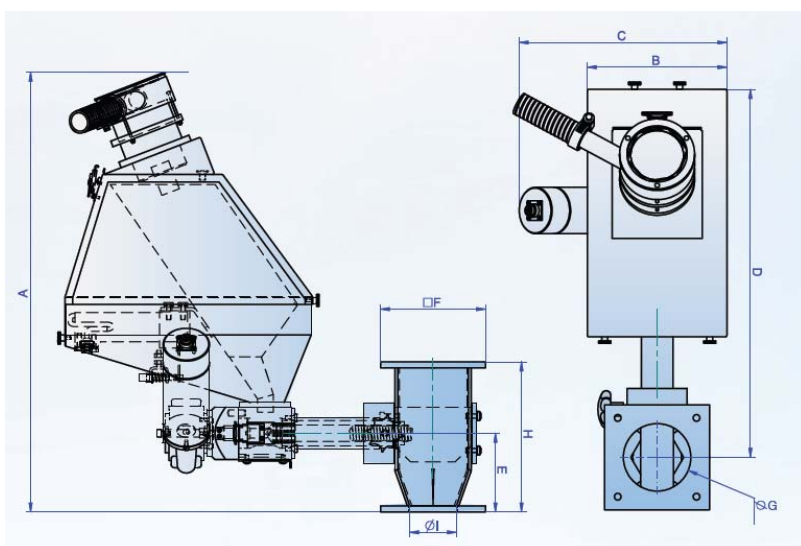


Neckpiece with Mixer
承接座含攪拌裝置

Color Save 1000 Applications

App. Versoin 應用項目	Injection Molding 射出機	Extrusion 押出機	Extrusion Blow Molding 押出吹塑機
Set Point 設定	Batch operation. Setting of desired MB/ additive percentage and shot weight. 批次操作. 設定所需的色母/ 添加劑比例及射出重量	Continuous operation. Setting of desired MB/ additive flow rate (kg/hr) or desired percentage from extruder throughput. 連續式操作. 設定所需的色母/ 添加劑處理量(kg/hr)及比例	Contunuous operation. Setting of desired MB/additive percentage and product weight. 連續式操作. 設定所需的色 母/添加劑比例及產品的重 量.
Input Signal 輸入信號	Dry contact input for synchronization with plastification cycle (and optional with injection cycle) 乾接點輸入, 與塑化週期同 步(或選擇射出週期)	Dry contact input for synchronization with extruder on/off operation and analog input 0-10V OR digital input relataive to extruder's speed (rpm) 乾接點輸入, 與押出機開/關操 作同步. 模擬輸入 0-10V 或數 字輸入押出機的轉速(rpm)	Dry contact input for synchronization with extruder on/off operation and dry contact input from blowing machin for synchronization with blow cycle. 乾接點輸入, 與押出機開/關操作同步. 或 吹塑機乾接點輸入, 與吹塑 機週期同步
Communication 通訊方式	TCP/IP	Optional TCP/IP	TCP/IP

Dimensions



外觀尺寸

Dimension (mm)	Hopper 3L	Hopper 6L	Hopper 10L
A	586	636	665
B	186	210	250
C	277	290	340
D	490	490	500
E	105	105	105
F	140	140	140
G	90	90	90
H	200	200	200
I	62	62	62

Specifications

Feature	Specification
Hopper 原料筒	3 / 5 / 10 liter 3 / 5 / 10 公升
Output range 處理量	0.02 – 80kg/hr 0.02 – 80 公斤/小時
Motor 馬達	Powerful brushless DC motor 強力無碳刷直流馬達
Controller 控制器	Sophisticated Powerful control unit, with alphanumeric display 先進具多功能的控制器, 及中英文操作畫面.
Loadcell 荷重單元	15kg max., temp. compensated 最大 15 公斤, 溫度補償.
Loader 吸料機	Automatic integral Venturi vacuum loader 自動整合正壓式吸料機
Mounting and feeding 安裝方式	By neckpiece adapter, directly into the machine throat 承接座可直接安裝在機台入料喉口處
Alarm output 警報輸出	N/O dry contact, 24V/30Ma max. Activated at: failure in filling, material no-fill or overdose N/O 乾接點, 最大 24V/30Ma, 動作: 補料失敗或計量過量
Weight 重量	16kg
Power 電壓	100-240V, 200W, 50/60hz, 單相

本公司保留產品設計變更之權力，產品規格如有變更，恕不另行通知。

Specifications, appearances and dimensions are subject to change without prior notice.



台美德科技股份有限公司

Formosa Automation Systems, Inc

Tel: +886-2-2641-5338 Fax: +886-22641- 5360

[Http://www.fasi.com.tw](http://www.fasi.com.tw)

E-mail: formosa@fasi.com.tw